

TKV SERIES DN125-DN3600 HDPE FLAP VALVES

PRODUCTION FACILITY

We design and manufacture the flap valves ourselves. Our team is ready to respond to your standard required or project-oriented designs. If requested we can also mount the flap valves for you.

MATERIALS

All flap valves are made from high quality HDPE materials or a combination of HDPE material and stainless steel reinforcements. The materials are highly corrosion resistant with a longevity and low maintenance cost.

The valve is made of high quality plastic whereas a steel valve can cause higher hydraulic losses and thus one needs a smaller and cheaper pump on site when applying an HDPE valve.

The hinged pin is adjusted to suit the valve size in order to prevent an oval hole being formed due to higher applying forces.



FLAP VALVES
 CERTIFICATE: ISO 9001: 2008
 INDUSTRIAL STANDARDS: DIN 19569-4

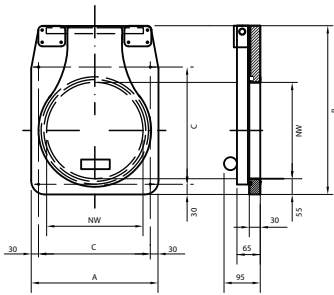
ADVANTAGES:

- High duty construction
- Light construction and thus easier installation and cheaper installation costs.
- Minimum maintenance
- Less hydraulic losses

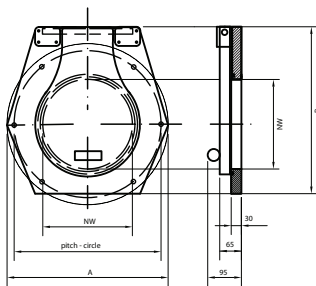
CHARACTERISTICS

Size 125 – 3600mm
 Standard 6 mwc
 Flange sealed on one side
 Mounting flat structure, PVC, concrete or internal rounded pit

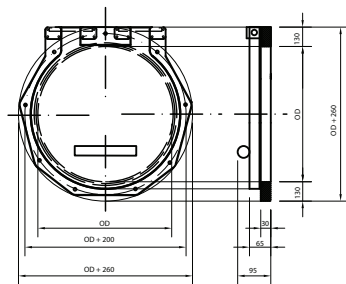


SPECIFICATIONS TKV SERIES DN125-DN1000 TYPE WALL MOUNTED

TKV SERIES DN 125 - 300

ØNW	A	B	C	Pressure	Weight
125	235	295	175	6 mwc	4
150	260	325	200	6 mwc	4
200	310	378	250	6 mwc	5
250	360	430	300	6 mwc	7
300	410	480	300	6 mwc	8


TKV SERIES DN 400 - 600

ØNW	A	B	Pitch	Pressure	Weight
400	Ø 610	603	Ø 550	6 mwc	11
500	Ø 710	699	Ø 650	6 mwc	14
600	Ø 810	824	Ø 750	6 mwc	18


TKV SERIES DN 400 - 600

Ø D	Width	Height	Pitch	Pressure	Weight
700	960	960	Ø 900	4 mwc	29
800	1060	1060	Ø 1000	3 mwc	34
900	1160	1160	Ø 1100	2.5 mwc	41
1000	1260	1260	Ø 1200	2 mwc	47

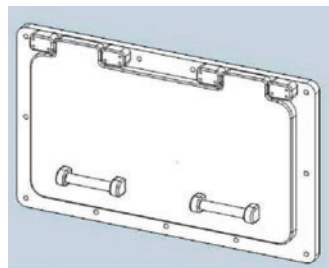
INDUSTRIAL STANDARD DIN 19569-4

 PRESSURE CHARACTERISTICS
 6 mwc

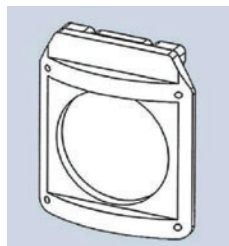
STANDARD CONSTRUCTION MATERIALS

 Frame: HDPE -300
 Valve: HMPE - 500 or HDPE - 300
 Valve hinge pin: Stainless steel AISI 316
 Sealing: EPDM

OPTIONS

 Other sizes up to 1000 mm
 Square, rectangular or oval


Inside round pit



TYPE TKV-F FLANGE MOUNTED

All TKV series are available in flange mounting